



FAQs

FAQs – Frequently Asked Questions

How can I find a partner?

New to our club or visiting from out of town: Call the club at (386) 255-7744 and tell the director when you want to play and your playing strength; they'll try to find you a partner. If the club is closed, leave a message on the answering machine. If you don't have time to call, just stop by ... with any luck they'll find someone for you on short notice. But it is better to call ahead. [Contact us.](#) [Club Policy](#)

Do you have bridge lessons?

Yes, before most games we have a 15-30 minute lesson covering a variety of topics and targeted for the playing strength of the session. Please see [lesson schedule](#). We also offer EasyBridge classes which run for about 15 weeks. Many of our current members started in EasyBridge.

Can I review game results on my computer at home?



The game summary showing ranked results, percentages and Masterpoints awarded as well as the individual board results are displayed. It is interesting to compare your results on a board with everyone else. These files are organized by date and can be found by clicking the [Game Results](#) links on our Home Page.

When you are away from us, you can still see who is playing and how they are doing.

If I don't have a Partner, can I still come in?

Absolutely! Single players are always welcome. [Contact us.](#) [Club Policy](#)

What are the game fees?

Game fees are \$4 dollars for members and \$5 for non-members.

How do I become a member?

You may pay your annual membership fee of \$15 to any Bridge Director. Membership runs from November 1st through October 31st each year. As a member, you pay reduced game fees, have access to our library, and receive a membership directory.

Do you have a Membership Directory?

Yes, and it is free to all members. Ask any Bridge Director for your copy.

Does the club have a Library?

Yes, we have a nice collection of Bridge Books available to our members. borrow them and if you have any Bridge books you no longer need, please donating them to our Library.

Please return the library books after you have had them for a month.



Please feel free consider

Can an incorrect score be corrected after the game is posted?

Absolutely! You must [contact the Game Director](#) for the session involved as they are responsible for making the changes. If it is a typo, they correct it immediately. If your scoring issue involves a score different than the score recorded on the traveler, then the director may have to contact your opponents to verify the score before it can be changed. This is to insure everyone agrees there was an error.

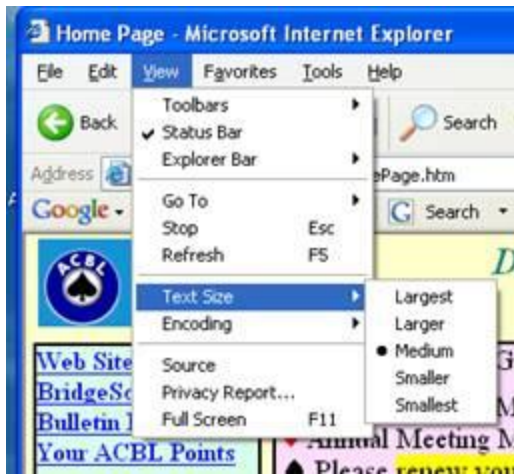
After the Game Director determines the facts, they change the score in our club computer (ACBLscore program and database) and uploads the corrected file to our website.

I see "I/N" on tournament flyers ... What does I/N mean?

I/N stands for Intermediate and Novice (or Newcomers) players.

My screen has text and pictures on top of each other, what's going on?

Check your "Text Size" on the "View Menu" -- change the text size until the screen looks correct. If it is set at Largest, move it to Larger and then to Medium and so on until it looks OK.



Do you have a link to the ACBL web site?

Yes, if you click the ACBL logo on any page, it takes you to the ACBL web site.

I want the Club Newsletter e-mailed to me each month. How do I sign up?

Click the links on the Newsletter page or send an e-mail to: Newsletter@DaytonaBridge.org

I want to submit my picture for the Guess Who game. What do I need to do?

Scan your picture and send it to the webmaster@DaytonaBridge.org or give your picture to Bill McManus he will scan it and return it to you.